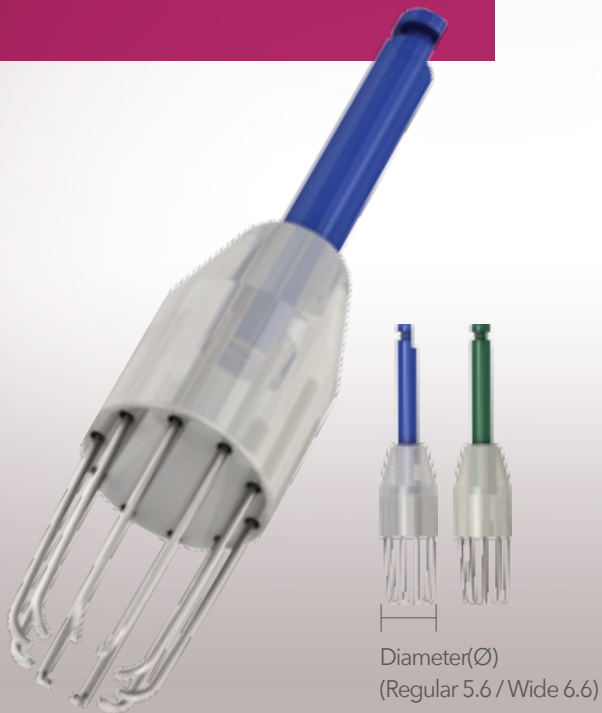
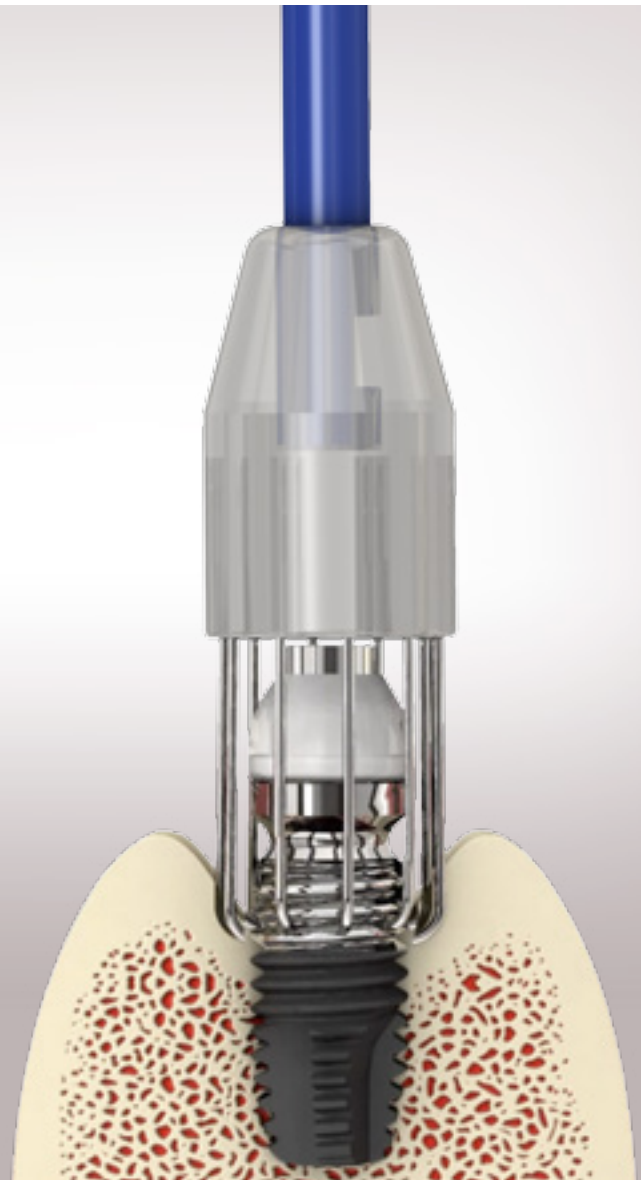


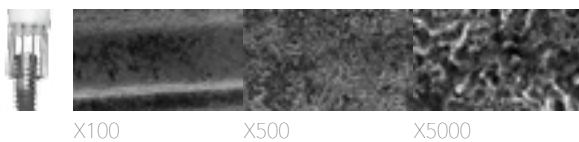
R-Brush



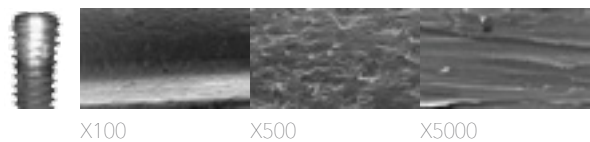
Perfectly cleanse the infected implant surface with Round-Brush.



Before R-Brush



After R-Brush



Severe periimplantitis and bone loss was observed and the prosthesis was removed.



Before using the R-Brush, a cover cap was connected onto the fixture.



The R-Brush was applied along the exposed implant surface with 2,000-5,000rpm.



The infected implant surface was perfectly cleansed after the use of R-Brush.

i-Brush



Precise cleansing for periimplantitis treatment.

Introduction

- Easy to use (No incision, Fast surgery)
- Perfect cleansing of the infected implant surface
- Rough surface is preserved
- Prevent further bone loss
- Facilitate new bone regeneration
- Decrease implant failure rate



1Box(1ea x 10)

Before i-Brush



Periimplantitis has occurred during animal test, and the implant S.L.A. surface was contaminated and infected.

After i-Brush



After 3 minutes of using the i-Brush without flap opening, neither contamination nor infection remained in the surface. Also, the rough surface was still preserved in the newly created surface.